

# Welcome to the Community Planning Learning Center

The purpose of planning, often called city planning, is to create a safe, attractive, healthy, and economically strong community. City planning is all around us. Cities have been planned for as long as they have been built. Where you live, learn, work, and play were all made by city planning choices.

## Planning Around Town

Land can be used for many things, such as housing, stores, parks, manufacturing, etc. Building a city is like putting together the pieces of a jigsaw puzzle. Learn more about how Salina's jigsaw pieces by using the City of Salina's Public Access Mapping System on the computer to answer the following questions.

- Type in your street address and have the computer locate your house.
- Click on the zoning map. Smoky Hill Museum's street address is 211 W. Iron. What zone is the museum in?
- Click on the 2001 and then the 2005 photo maps of Salina. What changes do you see?

## Getting Around Town

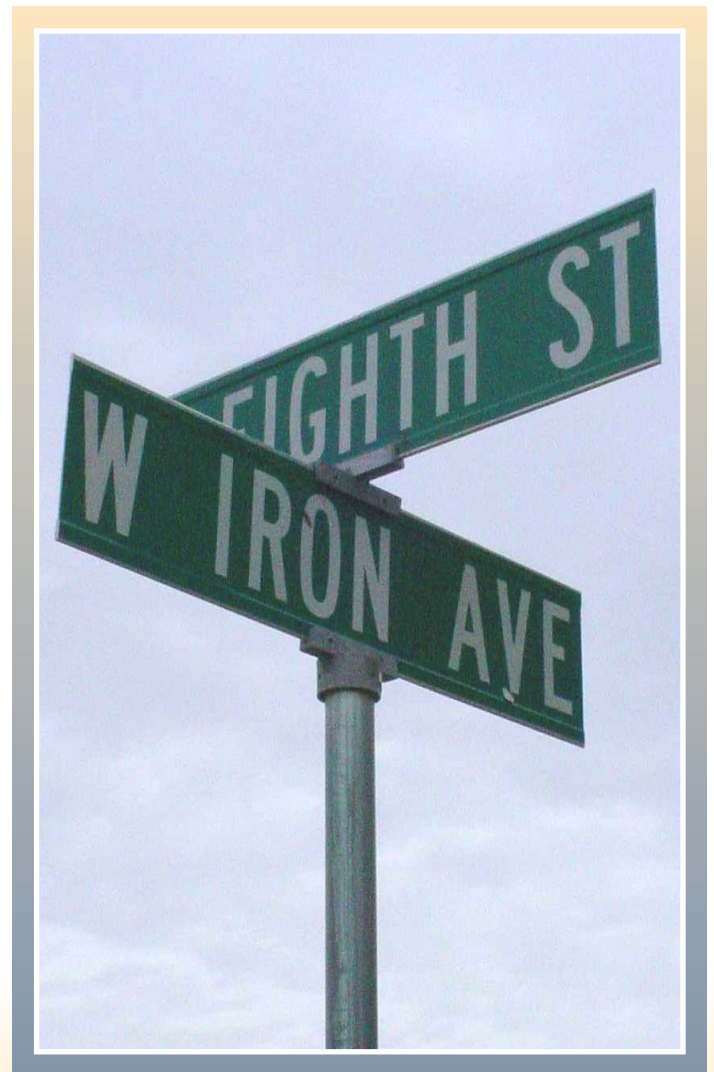
City planners must also think about the movement of people. What happens if more and more people move to Salina? How will people get from their home to work, to stores, or to school? Use the large floor map to see how people move around Salina.

- The Smoky Hill River flows through Salina. Can you find and trace it all the way through the city? How does the river affect traffic?
- Locate the following important Salina streets: Iron, Crawford, Ohio, Magnolia, and 9th.
- Looking at the map, see if you can determine the direction of Salina's future growth.

## Beyond the Museum

Salina street names are often grouped by subject, events, or people. See if you can find the ones we describe below. You can do these activities in your car or by using a city map.

- Salina used to be much smaller. Front Street and Ninth Street were two edges of early Salina. Can you find the other two streets that bordered Salina?
- Find a group of streets named for earlier military men, most from the Civil War.
- From Sunrise Street, travel 6 blocks west on Kirwin Street to 9th Street. Turn north and travel for 3 blocks. Look at the crossing street's name. Are you surprised at how fast the day went?
- Find Russell, Norton, Ellsworth, Beloit, and Kirwin Streets. What do their names have in common?



# Welcome to the Community Planning Learning Center

Here are a few of the things you can do by using the City of Salina's Public Access mapping (GIS) system.

- Locate Salina addresses along with legal descriptions
- See a map of showing City of Salina utilities
- See a map showing City of Salina zones and flood plains
- Use a 2001 or 2005 aerial photo of Salina
- Measure your home's lot
- Click on "Help" for additional information

**UTILITIES MAP**  
Identifies sewer lines, manholes, fire hydrants and other City of Salina utilities.

**GENERAL MAP**  
Identifies streets, parks, schools, addresses.

**PLANNING MAP**  
Identifies flood plain and zoned areas.

**ZOOM IN, ZOOM OUT, PAN**  
Click on the action you want taken. Then click on the map.

**IDENTIFY**  
Click on the parcel you want to identify.

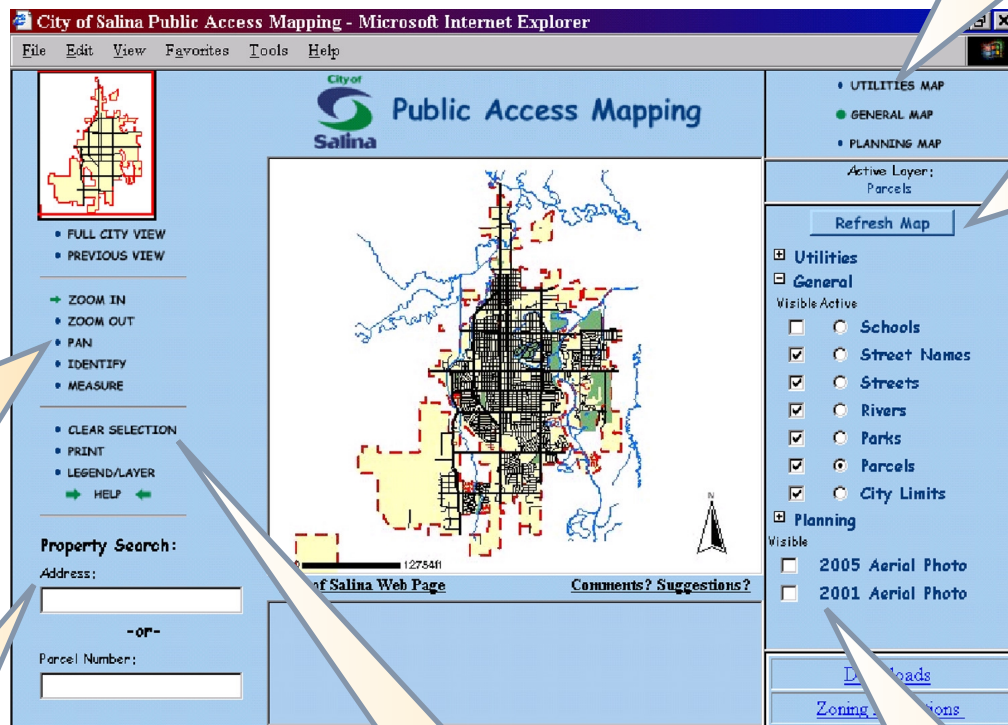
**MEASURE**  
Identify what you want to measure and move the icon around that area.

**PROPERTY SEARCH**  
Enter the address of the property you want to find.

A screen will appear in the box under the city map instructing you to "click number to locate parcel".

**WHEN YOU HAVE FINISHED USING THE GIS PLEASE CLICK ON "CLEAR SELECTION".**

**AERIAL PHOTO MAPS**  
For a photographic map click on either 2005 Aerial Photo or 2001 Aerial Photo.



You can access the City of Salina on your computer at home by going to the City of Salina's web site:  
[www.salina-ks.gov](http://www.salina-ks.gov)